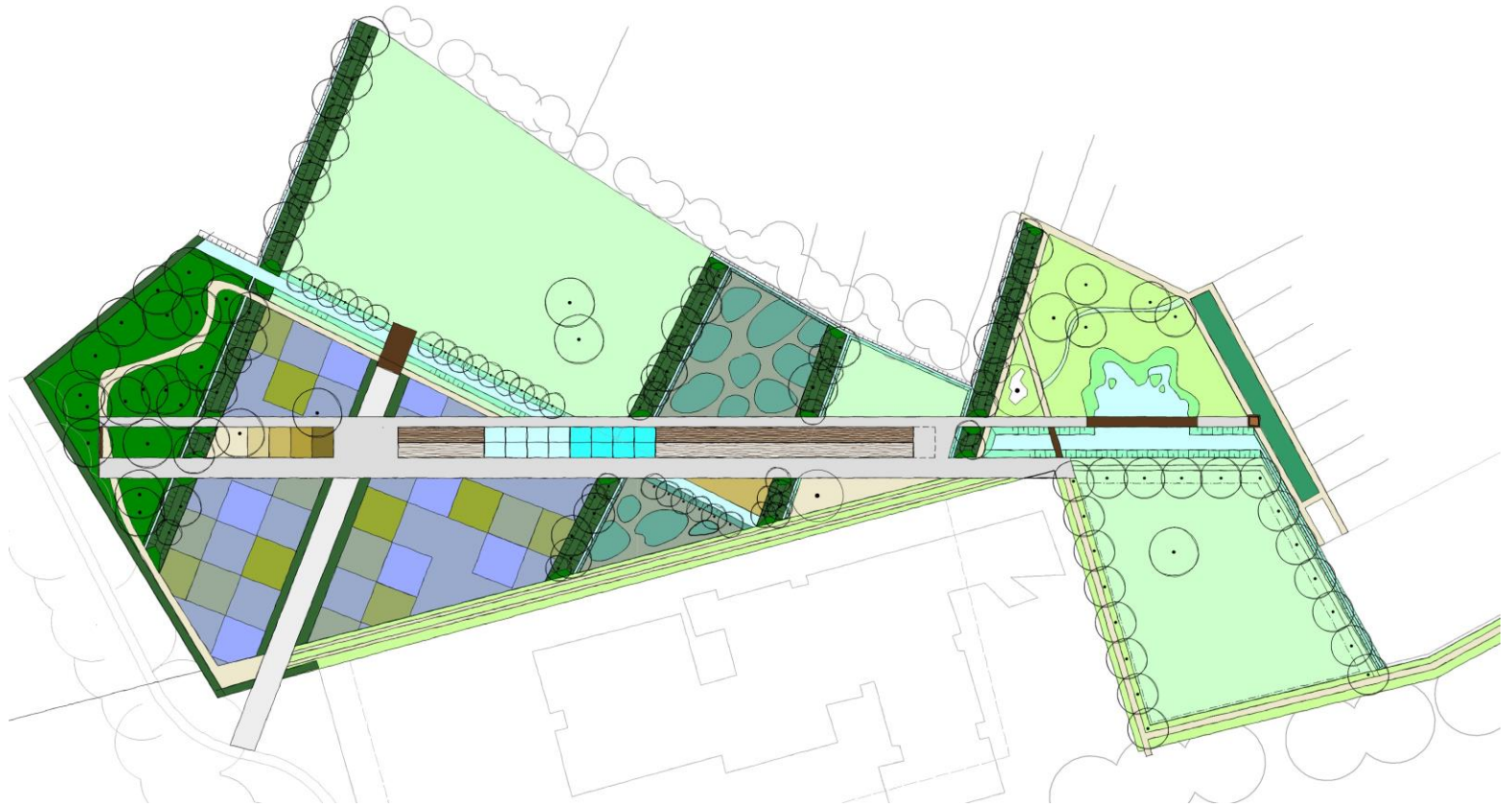


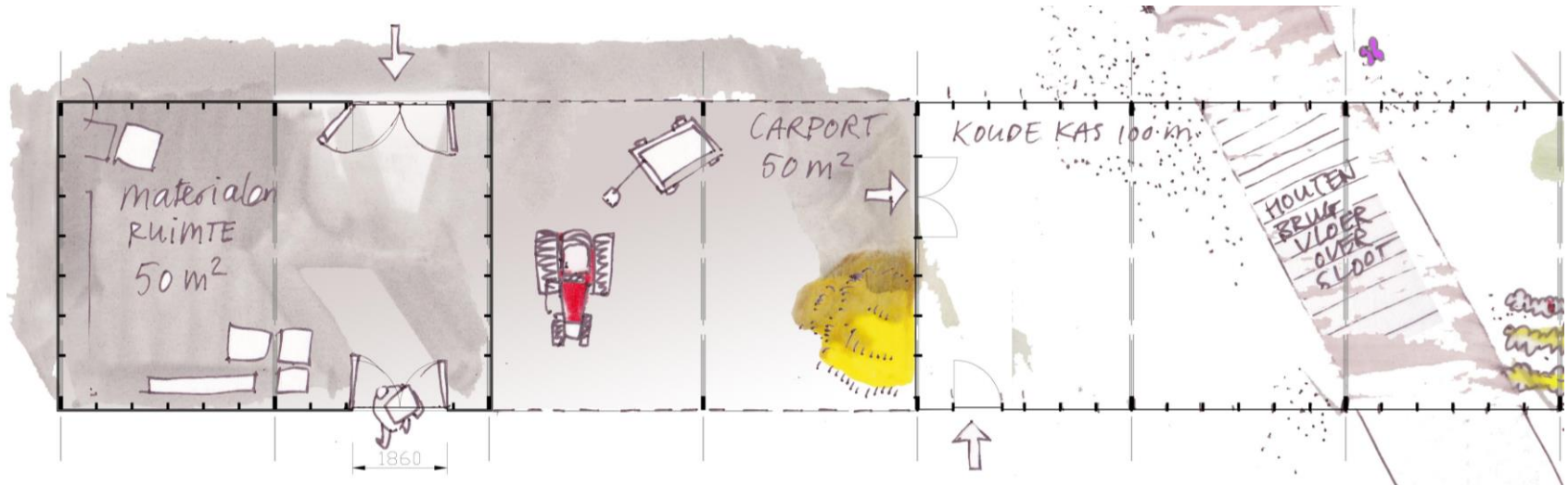
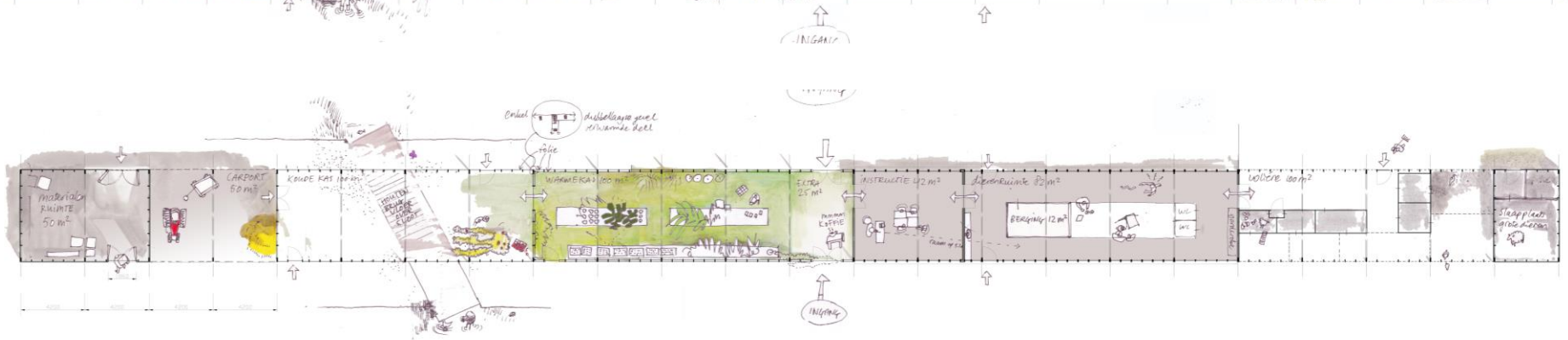
# collectieve leer- en buurttuin

An architectural sketch of a school campus. The central focus is a large green area with a blue stream or path winding through it. To the left, there are several small, simple houses. To the right, there are larger, more complex buildings. The sketch is done in a loose, hand-drawn style with light colors and some shading. The text 'collectieve leer- en buurttuin' is overlaid in large, bold, black letters at the top.

da vinci college  
roosendaal



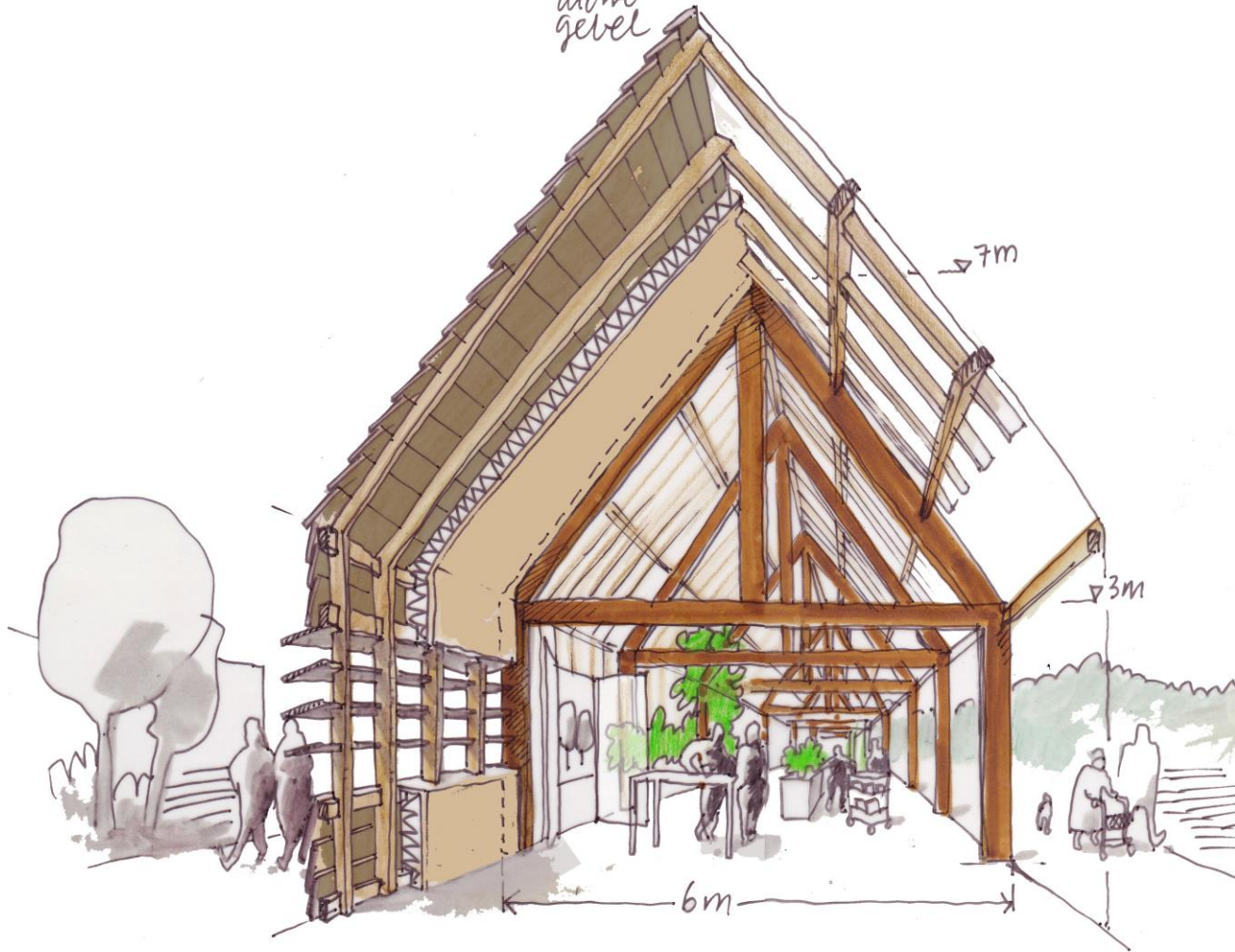


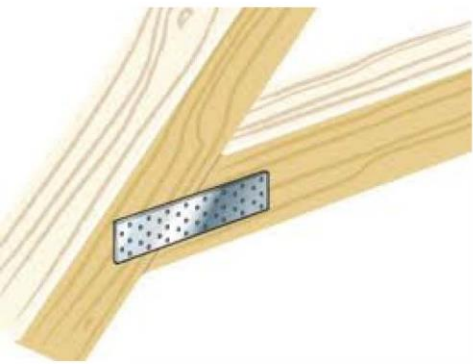




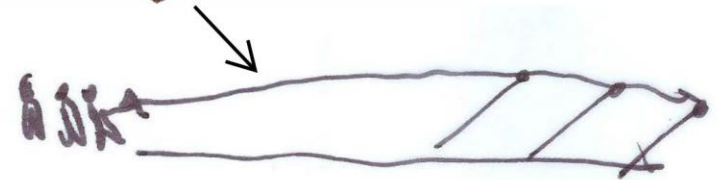
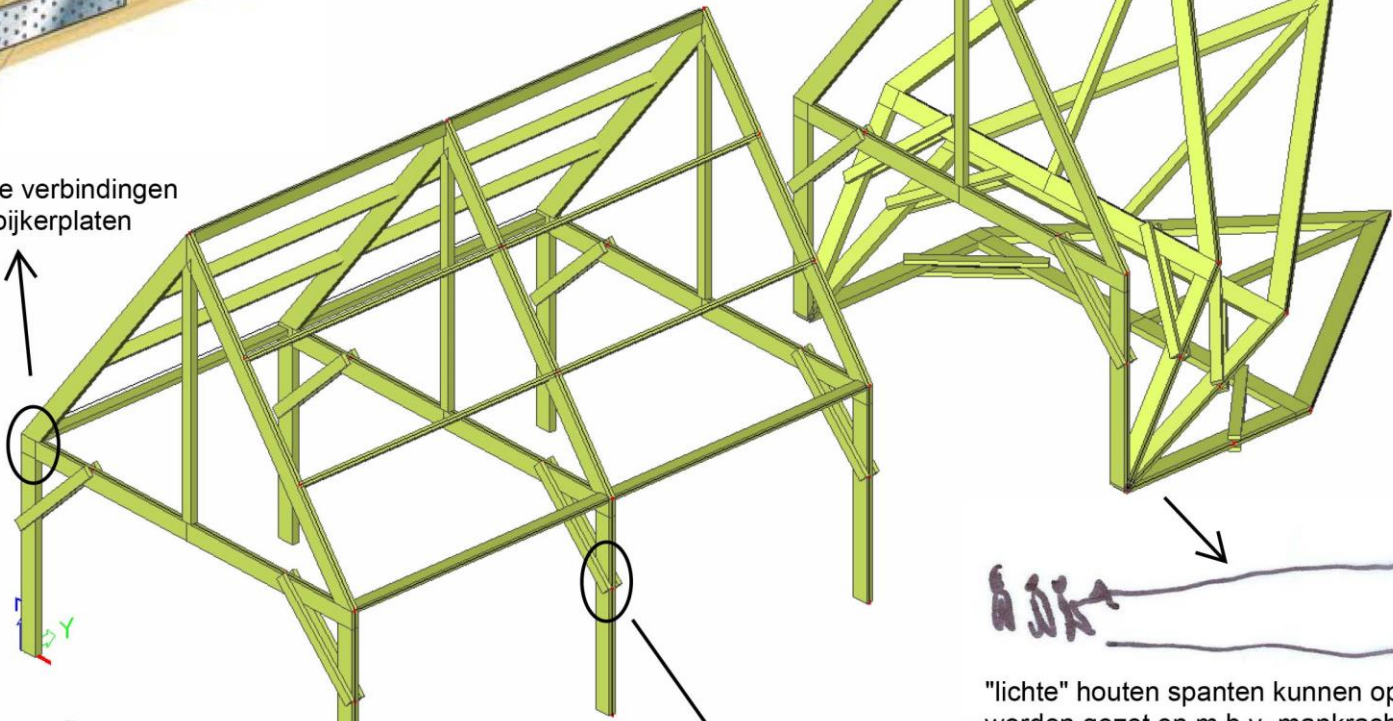
principe  
PLATO  
dichte  
gevel

principe  
KAS DOORSNEDEN





eenvoudige verbindingen met o.a. spijkerplaten



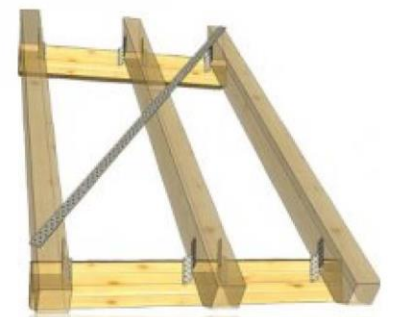
"lichte" houten spanten kunnen op de grond in elkaar worden gezet en m.b.v. mankracht verticaal gezet worden



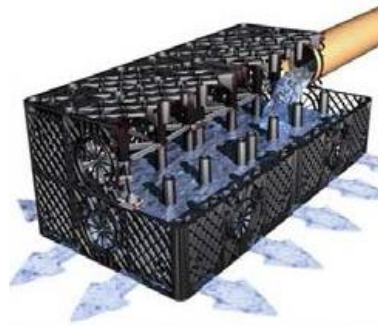
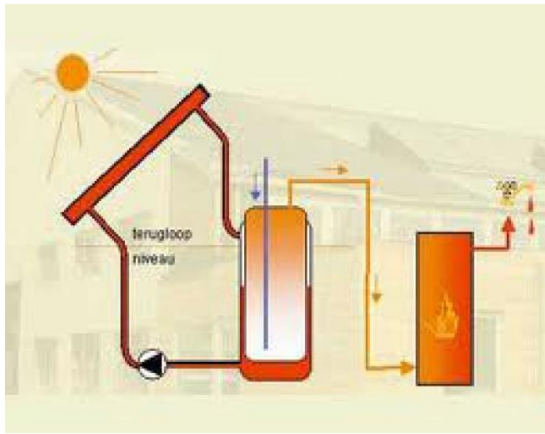
stalen kolomvoet op fundering



schoren verbinden met bouten



stabiliteit langsrichting m.b.v. bandstaal op wanden



# OFF THE GRID

